

STANDARD DEPARTURE CHART
INSTRUMENT(SID) - ICAO

TRANSITION ALT 14 000
TRANSITION LVL FL 140

SACHEON DEP 135.4
YEOSU TWR 122.5
240.9

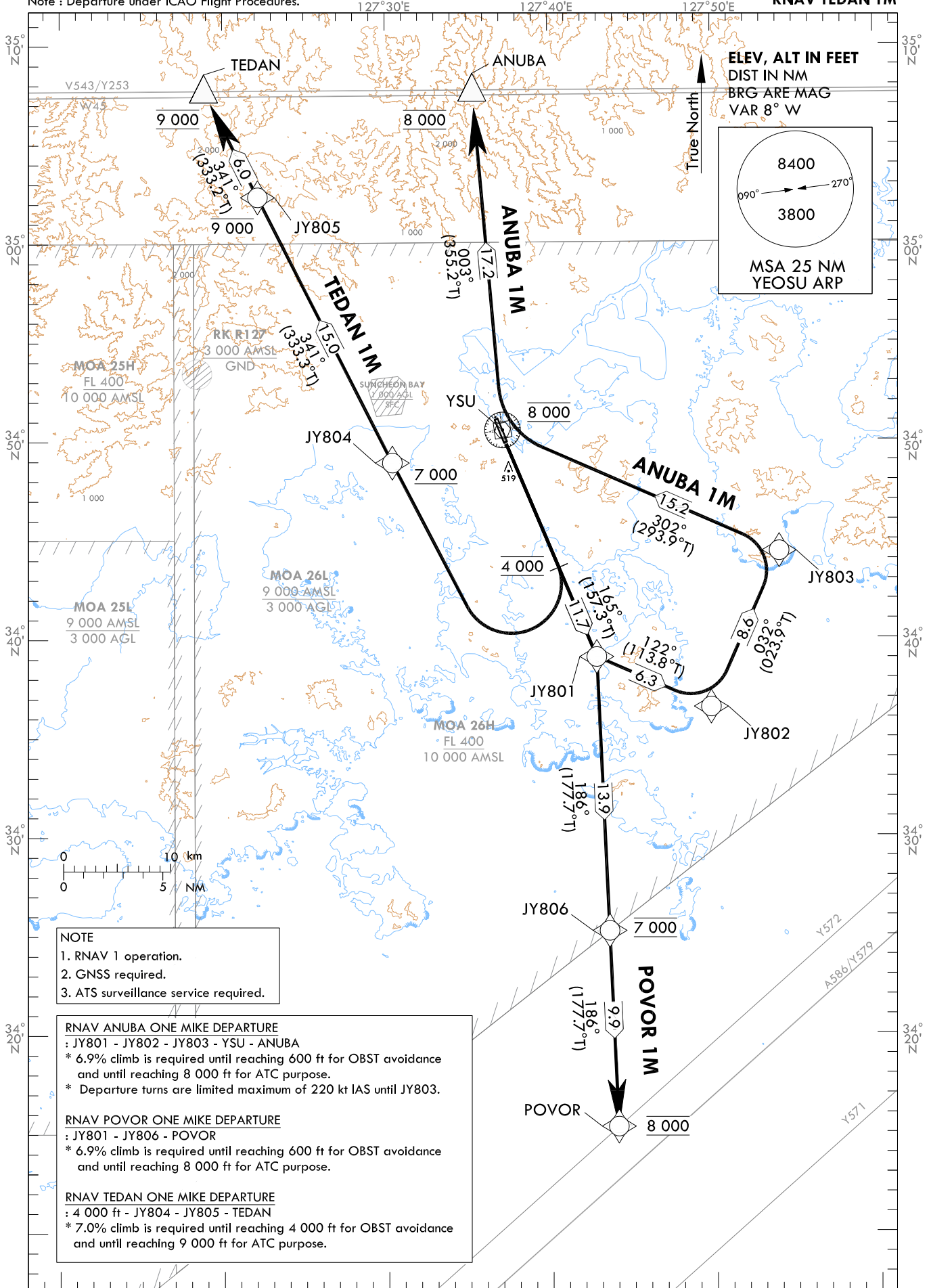
YEOSU/Yeosu(RKJY)

RWY 17

RNAV ANUBA 1M, RNAV POVOR 1M

RNAV TEDAN 1M

Note : Departure under ICAO Flight Procedures.



NOTE
1. RNAV 1 operation.
2. GNSS required.
3. ATS surveillance service required.

RNAV ANUBA ONE MIKE DEPARTURE
: JY801 - JY802 - JY803 - YSU - ANUBA
* 6.9% climb is required until reaching 600 ft for OBST avoidance and until reaching 8 000 ft for ATC purpose.
* Departure turns are limited maximum of 220 kt IAS until JY803.

RNAV POVOR ONE MIKE DEPARTURE
: JY801 - JY806 - POVOR
* 6.9% climb is required until reaching 600 ft for OBST avoidance and until reaching 8 000 ft for ATC purpose.

RNAV TEDAN ONE MIKE DEPARTURE
: 4 000 ft - JY804 - JY805 - TEDAN
* 7.0% climb is required until reaching 4 000 ft for OBST avoidance and until reaching 9 000 ft for ATC purpose.

Change : Information of standard instrument departure procedure for RWY 17(RNAV GOSBO 1M → RNAV POVOR 1M).

YEOSU/Yeosu(RKJY)
RWY 17

RNAV ANUBA 1M, RNAV POVOR 1M
RNAV TEDAN 1M

AERONAUTICAL DATA TABULATION

Standard Instrument Departure Procedure Coding Tables

RNAV ANUBA 1M												
Serial Number	Path Descriptor	Waypoint Identifier	Fly-over	Course/Track °M(°T)	Distance (NM)	Turn direction	Altitude (ft)	Speed (kt)	Coordinates	VPA/RDH	Navigation specification	Remarks
001	CF	JY801	-	165(157.3)	11.7	-	-	-220	34°39'05.5"N 127°42'49.7"E	-	RNAV 1	-
002	TF	JY802	-	122(113.8)	6.3	-	-	-220	34°36'32.5"N 127°49'48.6"E	-	RNAV 1	-
003	TF	JY803	-	032(023.9)	8.6	-	-	-220	34°44'25.1"N 127°54'02.0"E	-	RNAV 1	-
004	TF	YSU	-	302(293.9)	15.2	-	@8 000	-	34°50'34.3"N 127°37'08.7"E	-	RNAV 1	-
005	TF	ANUBA	-	003(355.2)	17.2	-	@8 000	-	35°07'45.9"N 127°35'22.8"E	-	RNAV 1	-

RNAV POVOR 1M												
Serial Number	Path Descriptor	Waypoint Identifier	Fly-over	Course/Track °M(°T)	Distance (NM)	Turn direction	Altitude (ft)	Speed (kt)	Coordinates	VPA/RDH	Navigation specification	Remarks
001	CF	JY801	-	165(157.3)	11.7	-	-	-	34°39'05.5"N 127°42'49.7"E	-	RNAV 1	-
002	TF	JY806	-	186(177.7)	13.9	-	@7 000	-	34°25'12.6"N 127°43'30.6"E	-	RNAV 1	-
003	TF	POVOR	-	186(177.7)	9.9	-	@8 000	-	34°15'19.7"N 127°43'59.7"E	-	RNAV 1	-

RNAV TEDAN 1M												
Serial Number	Path Descriptor	Waypoint Identifier	Fly-over	Course/Track °M(°T)	Distance (NM)	Turn direction	Altitude (ft)	Speed (kt)	Coordinates	VPA/RDH	Navigation specification	Remarks
001	CA	-	-	165(157.3)	-	-	@4 000	-	-	-	RNAV 1	-
002	DF	JY804	-	-	-	R	+7 000	-	34°48'55.7"N 127°30'22.5"E	-	RNAV 1	-
003	TF	JY805	-	341(333.3)	15.0	-	-9 000	-	35°02'21.9"N 127°22'09.7"E	-	RNAV 1	-
004	TF	TEDAN	-	341(333.2)	6.0	-	@9 000	-	35°07'43.8"N 127°18'52.1"E	-	RNAV 1	-

Change : Information of standard instrument departure procedure for RWY 17(RNAV GOSBO 1M → RNAV POVOR 1M).

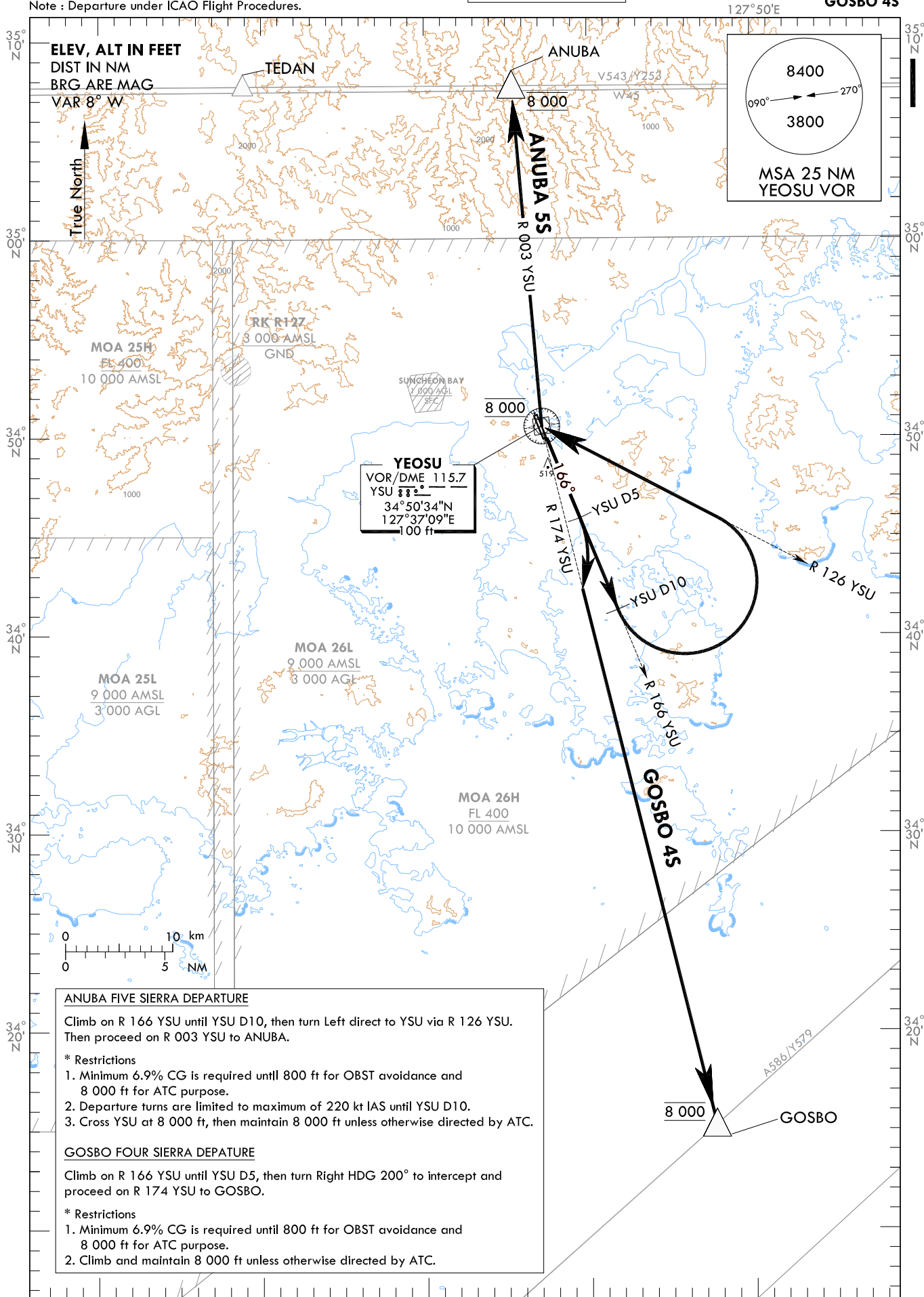
**STANDARD DEPARTURE CHART
INSTRUMENT(SID) - ICAO**

TRANSITION ALT 14 000
TRANSITION LVL FL 140

SACHEON DEP	135.4
YEOSU TWR	122.5
	240.9

YEOSU/Yeosu(RKJY)
RWY 17
ANUBA 5S
GOSBO 4S

Note : Departure under ICAO Flight Procedures.



Change : Withdrawal of PIPOL.

INTENTIONALLY

LEFT

BLANK

STANDARD DEPARTURE CHART
INSTRUMENT(SID) - ICAO

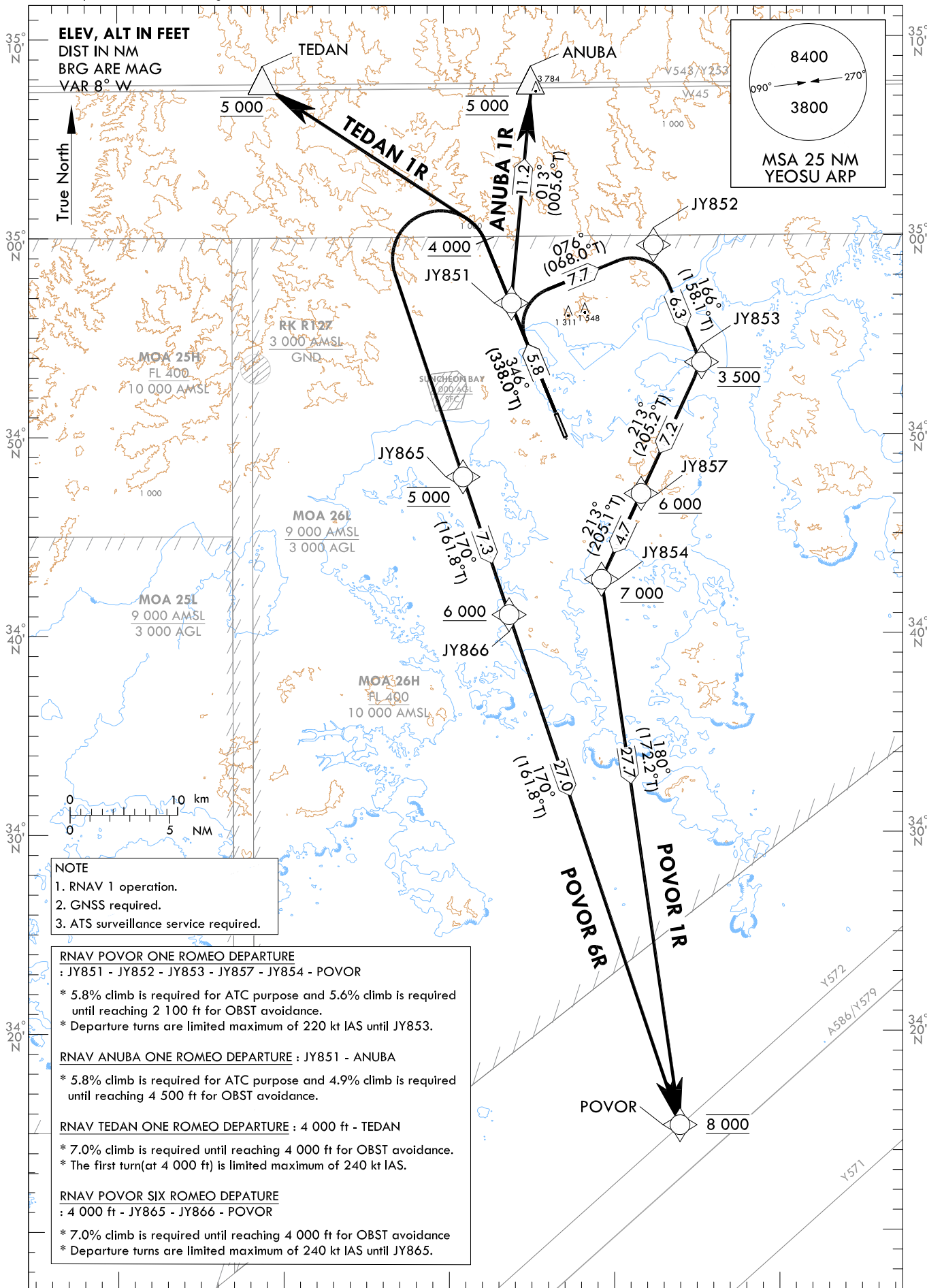
TRANSITION ALT 14 000
TRANSITION LVL FL 140

SACHEON DEP 135.4
YEOSU TWR 122.5
240.9

YEOSU/Yeosu(RKJY)
RWY 35

RNAV POVOR 1R, RNAV POVOR 6R
RNAV ANUBA 1R, RNAV TEDAN 1R

Note : Departure under ICAO Flight Procedures.



Change : Page control.

YEOSU/Yeosu(RKJY)

RWY 35

RNAV POVOR 1R, RNAV POVOR 6R

RNAV ANUBA 1R, RNAV TEDAN 1R

AERONAUTICAL DATA TABULATION

Standard Instrument Departure Procedure Coding Tables

RNAV POVOR 1R												
Serial Number	Path Descriptor	Waypoint Identifier	Fly-over	Course/Track °M(°T)	Distance (NM)	Turn direction	Altitude (ft)	Speed (kt)	Coordinates	VPA/RDH	Navigation specification	Remarks
001	CF	JY851	-	346(338.0)	5.8	-	-	-220	34°56'38.1"N 127°34'02.9"E	-	RNAV 1	-
002	TF	JY852	-	076(068.0)	7.7	-	-	-220	34°59'31.1"N 127°42'44.3"E	-	RNAV 1	-
003	TF	JY853	-	166(158.1)	6.3	-	@3 500	-220	34°53'37.1"N 127°45'37.1"E	-	RNAV 1	-
005	TF	JY857	-	213(205.2)	7.2	-	+6 000	-	34°47'05.5"N 127°41'54.0"E	-	RNAV 1	-
006	TF	JY854	-	213(205.1)	4.7	-	+7 000	-	34°42'47.3"N 127°39'27.4"E	-	RNAV 1	-
007	TF	POVOR	-	180(172.2)	27.7	-	@8 000	-	34°15'19.7"N 127°43'59.7"E	-	RNAV 1	-

RNAV ANUBA 1R												
Serial Number	Path Descriptor	Waypoint Identifier	Fly-over	Course/Track °M(°T)	Distance (NM)	Turn direction	Altitude (ft)	Speed (kt)	Coordinates	VPA/RDH	Navigation specification	Remarks
001	CF	JY851	-	346(338.0)	5.8	-	-	-	34°56'38.1"N 127°34'02.9"E	-	RNAV 1	-
002	TF	ANUBA	-	013(005.6)	11.2	-	@5 000	-	35°07'45.9"N 127°35'22.8"E	-	RNAV 1	-

RNAV TEDAN 1R												
Serial Number	Path Descriptor	Waypoint Identifier	Fly-over	Course/Track °M(°T)	Distance (NM)	Turn direction	Altitude (ft)	Speed (kt)	Coordinates	VPA/RDH	Navigation specification	Remarks
001	CA	-	-	346(338.0)	-	-	@4 000	-240	-	-	RNAV 1	-
002	DF	TEDAN	-	-	-	L	@5 000	-	35°07'43.8"N 127°18'52.1"E	-	RNAV 1	-

RNAV POVOR 6R												
Serial Number	Path Descriptor	Waypoint Identifier	Fly-over	Course/Track °M(°T)	Distance (NM)	Turn direction	Altitude (ft)	Speed (kt)	Coordinates	VPA/RDH	Navigation specification	Remarks
001	CA	-	-	346(338.0)	-	-	@4 000	-240	-	-	RNAV 1	-
002	DF	JY865	-	-	-	L	@5 000	-240	34°47'58.5"N 127°31'03.1"E	-	RNAV 1	-
003	TF	JY866	-	170(161.8)	7.3	-	+6 000	-	34°41'02.0"N 127°33'49.1"E	-	RNAV 1	-
004	TF	POVOR	-	170(161.8)	27.0	-	@8 000	-	34°15'19.7"N 127°43'59.7"E	-	RNAV 1	-

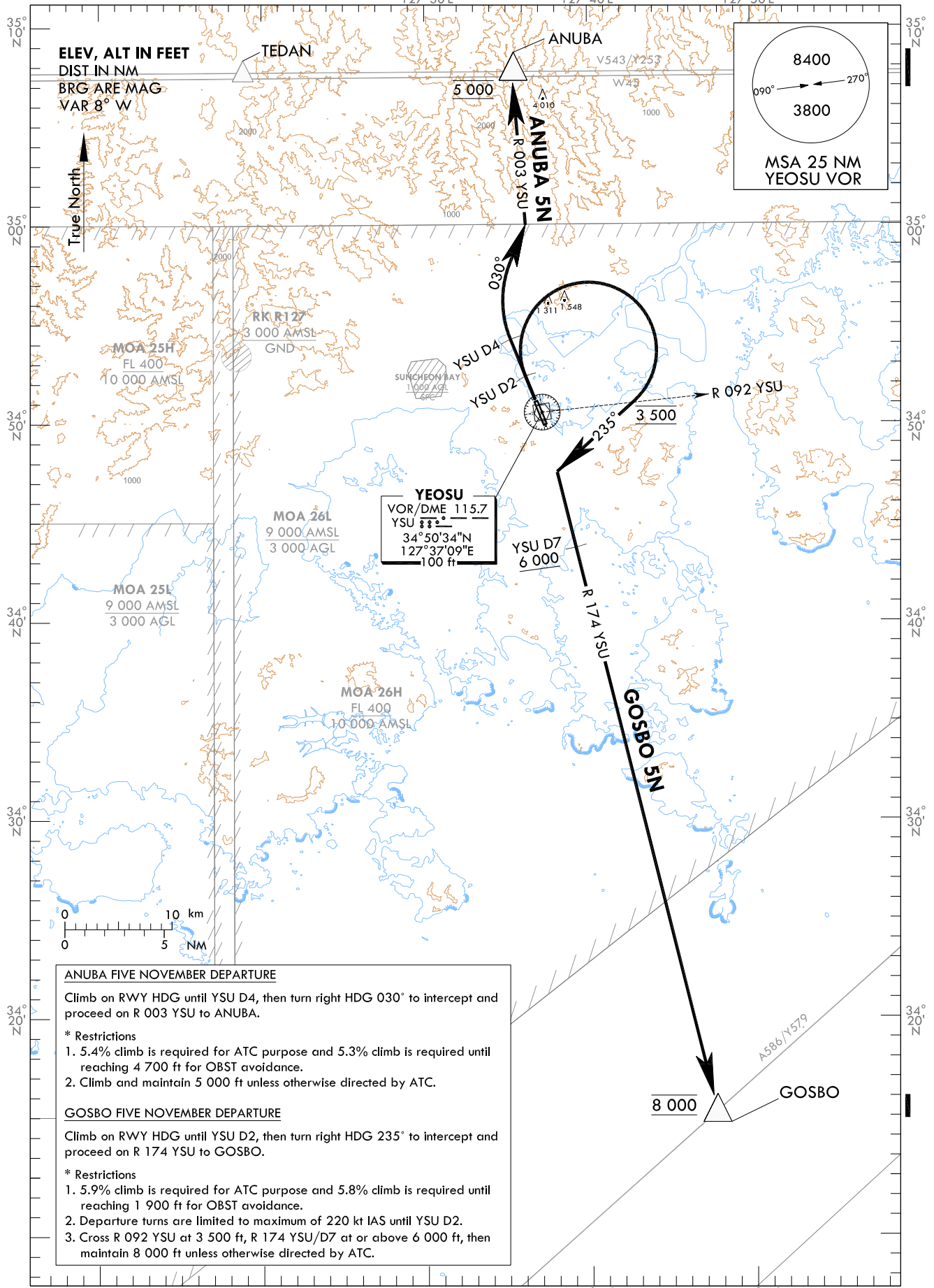
STANDARD DEPARTURE CHART
INSTRUMENT(SID) - ICAO

TRANSITION ALT 14 000
TRANSITION LVL FL 140

SACHEON DEP 135.4
YEOSU TWR 122.5
240.9

YEOSU/Yeosu(RKJY)
RWY 35
ANUBA 5N
GOSBO 5N

Note : Departure under ICAO Flight Procedures.



ANUBA FIVE NOVEMBER DEPARTURE
Climb on RWY HDG until YSU D4, then turn right HDG 030° to intercept and proceed on R 003 YSU to ANUBA.
* Restrictions
1. 5.4% climb is required for ATC purpose and 5.3% climb is required until reaching 4 700 ft for OBST avoidance.
2. Climb and maintain 5 000 ft unless otherwise directed by ATC.

GOSBO FIVE NOVEMBER DEPARTURE
Climb on RWY HDG until YSU D2, then turn right HDG 235° to intercept and proceed on R 174 YSU to GOSBO.
* Restrictions
1. 5.9% climb is required for ATC purpose and 5.8% climb is required until reaching 1 900 ft for OBST avoidance.
2. Departure turns are limited to maximum of 220 kt IAS until YSU D2.
3. Cross R 092 YSU at 3 500 ft, R 174 YSU/D7 at or above 6 000 ft, then maintain 8 000 ft unless otherwise directed by ATC.

Change : Withdrawal of PIPOL and Establishment of ALT limitation for GOSBO.

INTENTIONALLY

LEFT

BLANK